



CLUBSIDE  
APARTMENTS

IN THE HEART OF DISTRICT FIVE

---

DISTRICT





# WELCOME TO DI5TRICT

District Five is the result of MARAKEZ's firm belief that high-quality living is attainable and that you can find the lifestyle you wish to experience in your own homes. At District Five, you'll find everything from offices, sports, shopping, entertainment and more. We've built a suburban residential community with the qualities and convenience of urban living.





FIVE JOURNEYS  
ONE DESTINATION  
DI5TRICT



ONE DESTINATION

FIVE JOURNEYS



JOURNEY

N°2  
Play



JOURNEY

N°4  
Shop



JOURNEY

N°1  
Live



JOURNEY

N°3  
Grow



JOURNEY

N°5  
Work



JOURNEY

# Nº1 Live

District Five Residences promotes the outdoor experience in a safe environment through an integrated network of trail systems, bike lanes, landscaped parks and plazas connected to the heart of the project - D'Clubhouse and Gateway Plaza. An array of homes is available in a modern yet earthy architecture with a focus on generous interior spaces.







JOURNEY

# Nº2 Play

Take a break, enjoy life and play. You rarely have to leave District Five. A variety of leisure and entertainment options can be found in District Five's Lifestyle Centre, including cinema, theatre, restaurants, cafés & fine dining options. An outdoor plaza allows visitors to also enjoy the greenery and special family entertainment options where kids can play in a fun and safe environment.



JOURNEY

# Nº 3 Grow

At District Five, you're invited to grow into the best version of yourself and make use of the pool, gym and sports facilities. Fitness studios will offer fitness classes, yoga, pilates, and meditation ensuring you connect both physically and mentally at District Five.







JOURNEY

# N°4 Shop

As one of the fastest growing mixed-use developers in Egypt with a record of retail and commercial developments such as Mall of Arabia and Mall of Tanta. MARAKEZ's mixed-use developments create the ideal mix of residential and commercial projects.

Walkability is an essential element of a healthy residential community. That is why retailers, supermarkets and other service providers such as banks, telecoms, pharmacies and more, are adjacent to all of Marakez's residential projects. District Five's Mall of Katameya brings all daily necessities alongside the newest dining experiences and the latest fashion brands under one roof a mere stroll away from the Clubside Apartments and the rest of District Five's Residences.



JOURNEY

# N°5 Work

District Five's office parks Mindhaus Campus & Mindhaus Strip offer leasable and sellable offices ideal for startups, entrepreneurs, and medium-sized enterprises looking for flexible offices in a premium location. Its strategic location adjacent to District Five's commercial zone situates it a short 7-minute drive from Road 90.





A close-up photograph of several green palm fronds, likely from a coconut palm, arranged in a crisscross pattern. The fronds are vibrant green with visible veins and some brownish tips. The background is softly blurred, showing more of the same foliage. The text 'LOCATION & MASTERPLAN' is overlaid in white, uppercase letters on the right side of the image.

LOCATION  
& MASTERPLAN



# Connectivity & Mobility

Connectivity has become an essential factor for our ability to get the most out of every single day. Through the construction of two major bridges crossing over Ain Sokhna Highway, MARAKEZ seamlessly connects District Five to New Cairo and its surrounding neighborhoods granting easy access to and from.

Road 90	7 min
AUC	8 min
Maadi	13 min
Airport	19 min
Heliopolis	30 min
Sokhna	45 min
Gouna	210 min







# Masterplan

A 200-acre integrated mixed-use development offering the opportunity to experience five journeys in a single destination.



A variety of residential prototypes – garden apartments and townhomes.



A playful entertainment and leisure Lifestyle Centre on approximately 17,000 sqm of GLA.



An international standard Shopping Centre on approximately 43,000 sqm of GLA.



A professional platform to grow at the Wellness facilities.



A state-of-the-art commercial area including offices and coworking spaces.

- Mindhaus Campus
- D Street
- Mall Of Katameya
- Single Family Homes
- Lifestyle Center
- Clubside Apartments
- Mindhaus Strip
- Clubhouse
- Multi-Family Homes



# A MASTERPLAN GRANTING Space & Views



Meticulously masterplanned, each residential building at Clubside Apartments is strategically situated with the utmost space and privacy between its neighboring buildings granting unobscured views from every window. Spacious rooftop terraces offer prime views of the Clubside Private Park and its different functions, an outdoor work-out arena and BBQ stations. At Clubside Apartments necessities are all at arm's length.





D'CLUBHOUSE



# D' Clubhouse

## AMENITIES STEPS AWAY FROM HOME

Steps away from Clubside Apartments, D' Clubhouse is designed to be the living heart of District Five's residential community. Offering the ideal place for entertainment, socializing, and relaxation; its indoor facilities include a restaurant, cafe, TV room, game room, lounge area, pool house and a terrace opening up to the outdoor area.



Restaurants and Cafes



TV Lounge



Kids Playground



Leisure Pool & Cabanas



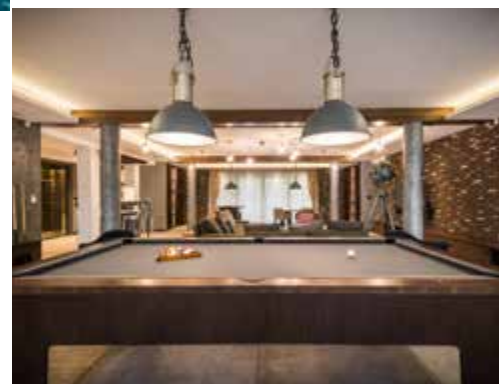
Kids Pool



Multi-Purpose Court



Activity Tables



Indoor Game Room



Tennis Court





CLUBSIDE  
APARTMENTS



# Introducing Clubside Apartments IN THE HEART OF DISTRICT FIVE

District Five introduces its exclusive Clubside Apartments situated in the heart of District Five and a stroll away from D' Clubhouse. Built away from the density, its contemporary architecture and aesthetically designed internal spaces complement its serenity and grant green open views for all units alike.

Situated in the heart of the residences, Clubside Apartments' Private Park leaves no room but to disconnect amid massive greens away from the hustle of everyday life. Whether at D' Clubhouse for leisure, Mindhaus for work, Mall of Katameya for shopping; your home is merely steps away.

























MARAKEZ 



Marakez is the leading mixed-use developer in Egypt, with a continuously growing portfolio of residential and commercial projects including District Five, Aeon Residences, Mall of Arabia, Mall of Tanta, Mall of Katameya and Mindhaus offices; bringing a breadth of experience from a dynamic team of experienced and innovative Egyptian professionals.









